



Narvitech®



# User Manual

# NJ300

## HDMI Capture Box

# Content

---

<b>How to live stream via Screen Recorder 4 with NJ300</b>	<b>3</b>
Download and install	3
Setting	4
Start streaming	6
Start recording	8
<b>How to live stream via Xsplit with NJ300</b>	<b>9</b>
Download and install	9
Video and Audio settings	13
Start streaming	15
Start recording	18
<b>How to live stream via OBS with NJ300</b>	<b>19</b>
Download and install	19
Setting	20
Start streaming	23
Start recording	25
<b>NJ300 Special Features: Party Chat Capture</b>	<b>26</b>
Hardware connection	26
Volume control software download and installation	26
<a href="#">Statement</a>	<a href="#">28</a>
<a href="#">Get assistance</a>	<a href="#">29</a>

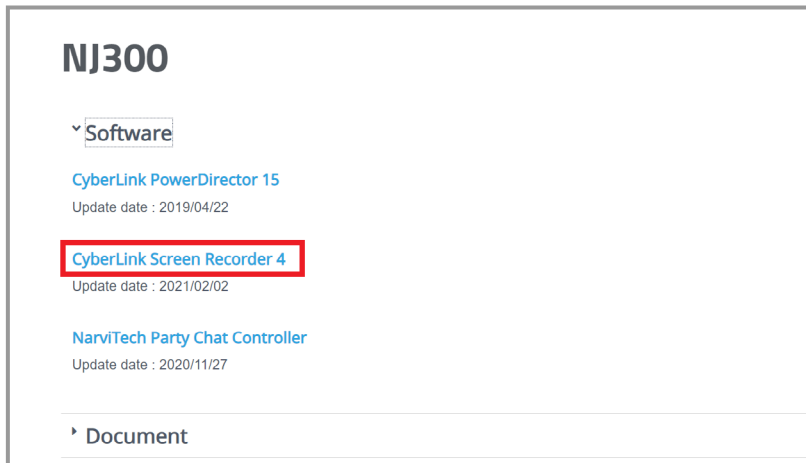
# How to live stream via Screen Recorder 4 with NJ300

The bundled software Screen Recorder 4 is a full-featured, easy-to-use live streaming software. Before starting to introduce the use of the software, please be sure to complete the connection process of the quick guide (please refer to: How to connect?). The following live broadcast process will be demonstrated with PS4.

1. The software only supports Windows 10, 8.1, 7 SP1 (64-bit Windows 10 is recommended)
2. Only the software serial number card is provided in the NJ300 package, and the software CD is not included.
3. The accompanying Screen Recorder 4 cannot be updated with the official version of Cyberlink

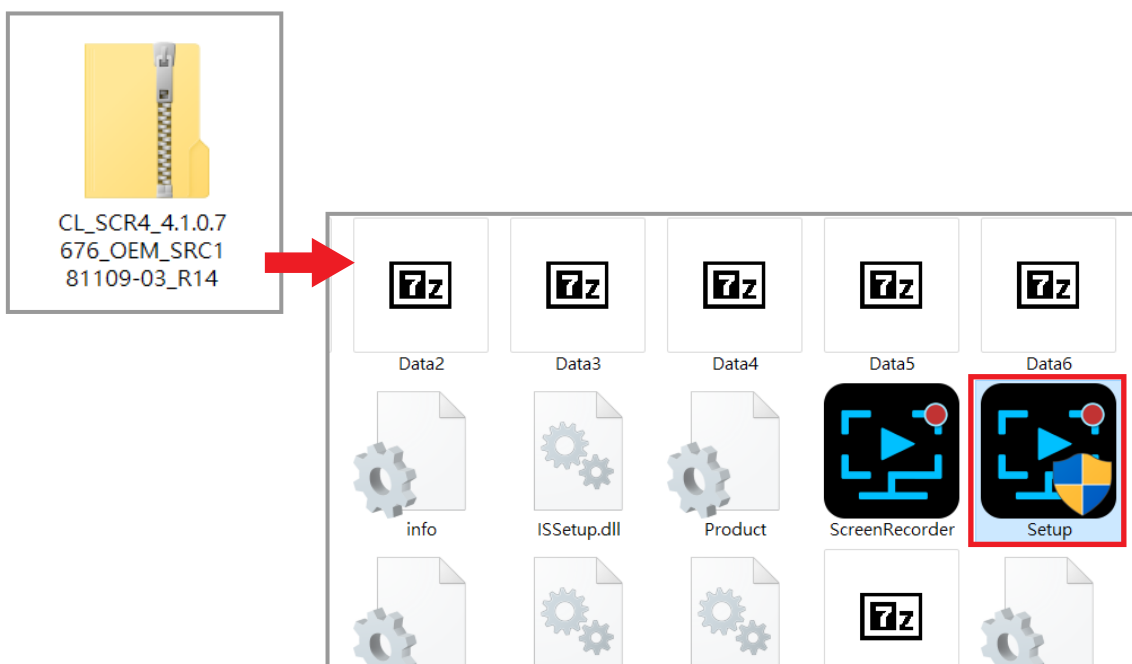
## Download and install

First, go to Narvitech's official website (Narvitech.com), then go to Support Center > Download Area > NJ300 > Software to find the download link: Cyberlink Screen Recorder 4

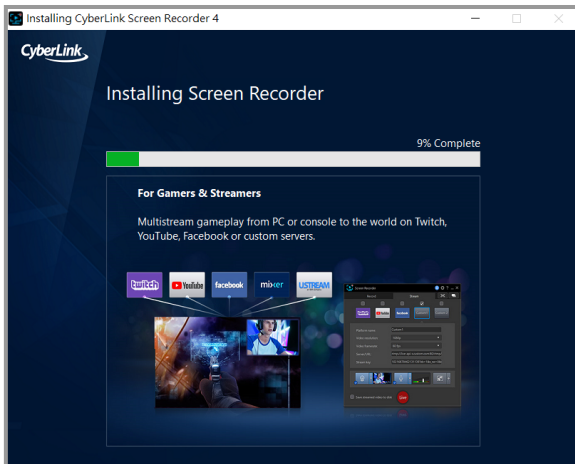


After entering the page, scroll up to NJ300 to see the

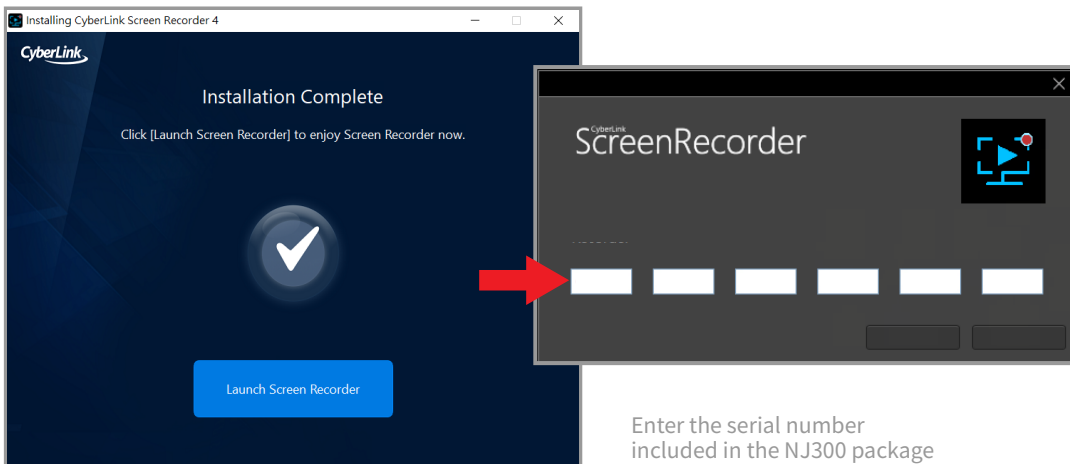
Once the download is complete, unzip the file and click on the folder to open the "Setup" application



Open the program, select the language and storage location then start the installation



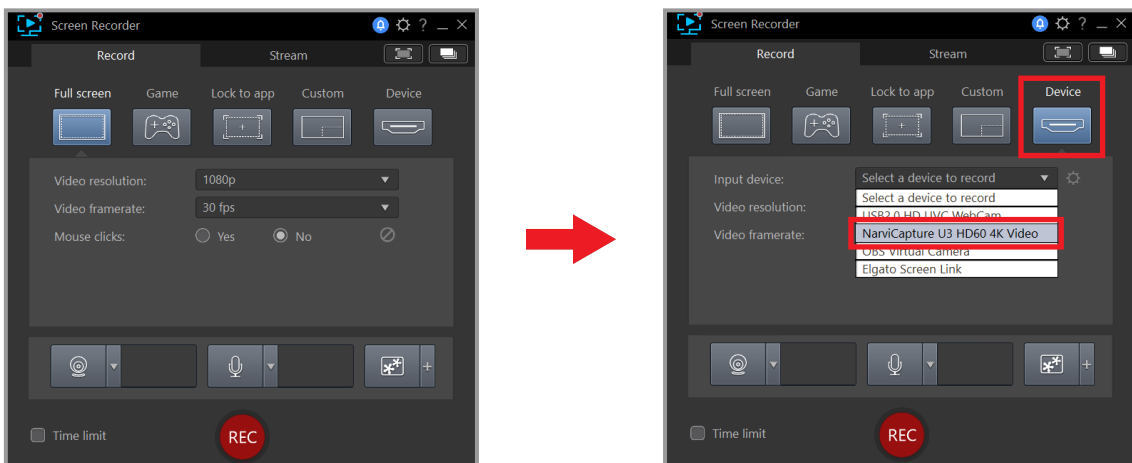
After the installation is completed, enter the serial number to activate the program



Enter the serial number included in the NJ300 package

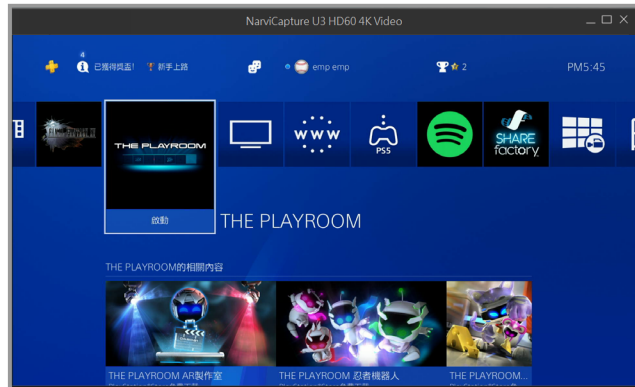
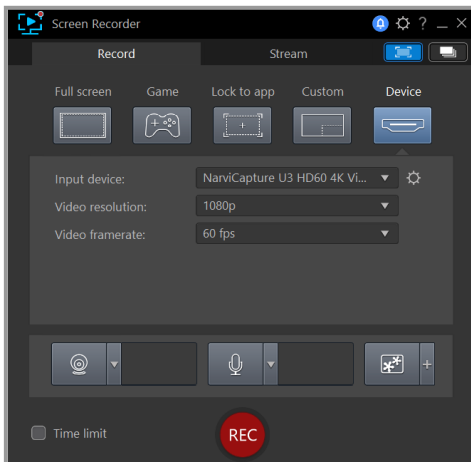
## Settings

After the installation is complete and the serial number is entered, open Screen Recorder 4 to enter the interface as shown below, then click Device>Select the device to record>NarviCapture U3 HD60 4K Video

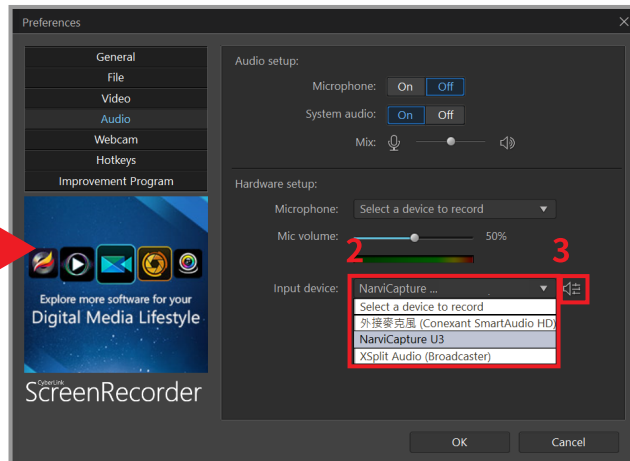


After selecting the input device, jump out of the preview screen, you can adjust the preview volume in the upper left corner to test (the volume of non-recording and live output)

1. When recording or live, please adjust the preview volume to mute to avoid errors
2. If the preview screen is black after selecting the input device, please turn off the HDCP of the device (PS4: Settings>System>HDCP>Off)



Then set the sound, click on the upper right corner 1. Gear (Preferences) > Audio > 2. Input Device: Digital Audio Interface (NarvitCapture U3 HD60 4K Video) > 3. Volume Control Button



After turning on the volume control button, the USB Audio Control window will pop up. The adjustment bar in the red frame can adjust the volume of the input from the game console. After the volume is set, you can prepare for the live broadcast!

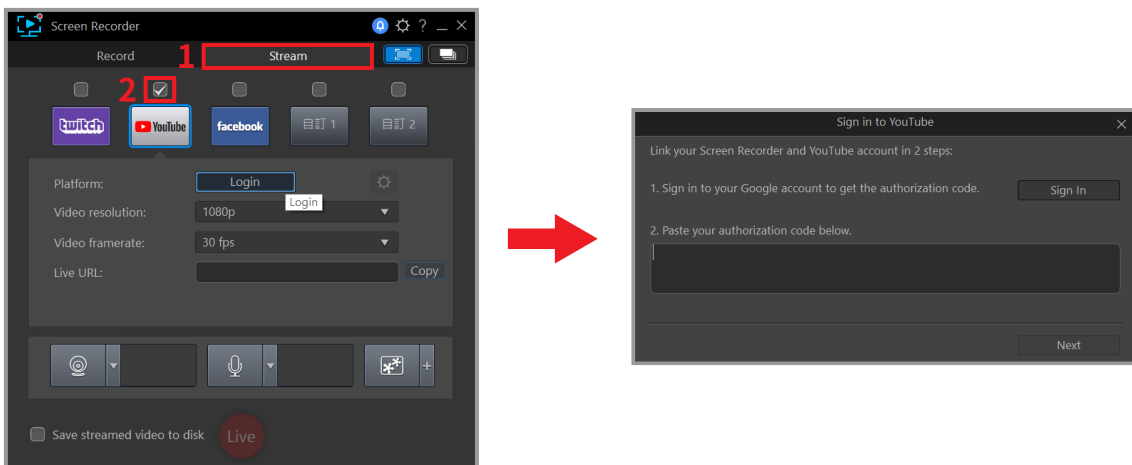
1. Before the actual recording or live, please drag the preview volume control of the preview screen to the full grid to test the volume

# Start streaming

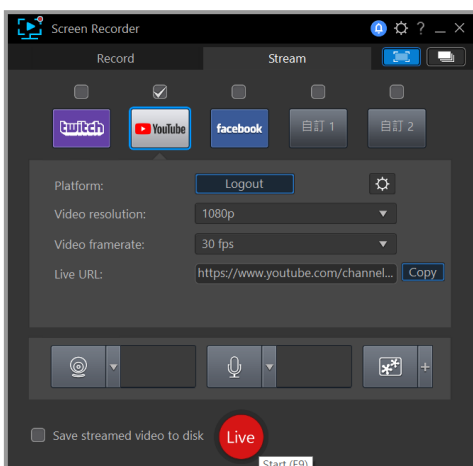
After the hardware connection and software settings are completed, you can prepare to stream. Please be sure to test before the live broadcast (for example: sign up a test account to check for your streaming quality) to ensure that the resolution, volume, and content of the live broadcast are what you want.

1. To stream on Youtube, an account must be signed up first
2. Youtube activation process: [Youtube homepage> click "Create" in the upper right corner of the page> Live broadcast and wait for 24 hours to activate the account.]
3. The highest resolution of Facebook live streaming only supports 720P
4. If you want to stream on other platforms, you need to enter the URL and stream key
5. check multi-platform live

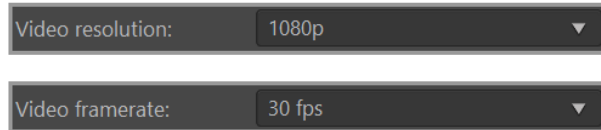
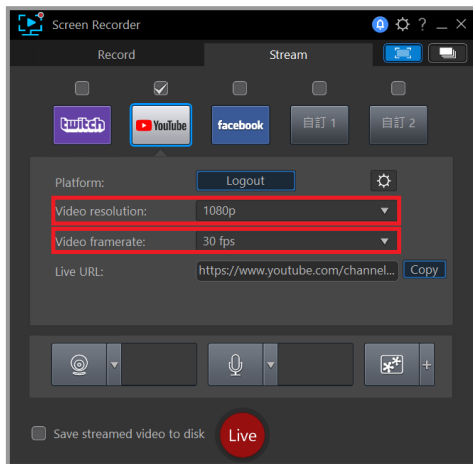
First click on the live mode and check one of the platforms of Twitch, YouTube, Facebook (take YouTube as an example), after checking it, follow the instructions



See the interface below to indicate that the login is successful!



Before pressing "Live", you can adjust the resolution and frame rate of the live video in the red frame. It is recommended that you have at least 15Mbps of upload internet speed for live streaming at 1080p (you can test it through Google Fiber)

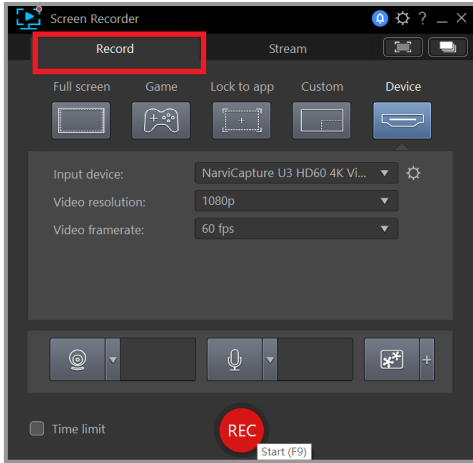


**Press "Live" at the end to start your awesome live session!**

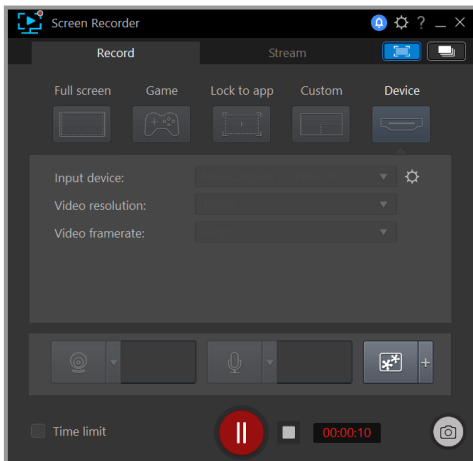
**For more additional functions of Screen Recorder 4, you can read the full version of Screen Recorder 4 User Manual Path: Narvitech Website>Support**

## Start recording

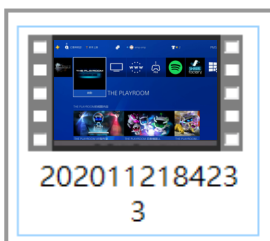
First, click "Recording Mode" in the upper left corner, then adjust the video resolution and frame rate according to your personal needs. After adjustment, press "REC" to start recording.



To pause recording press the bottom center red button; to end recording press F9



After recording, the system automatically pops out of the video folder, and you can edit the recorded video.





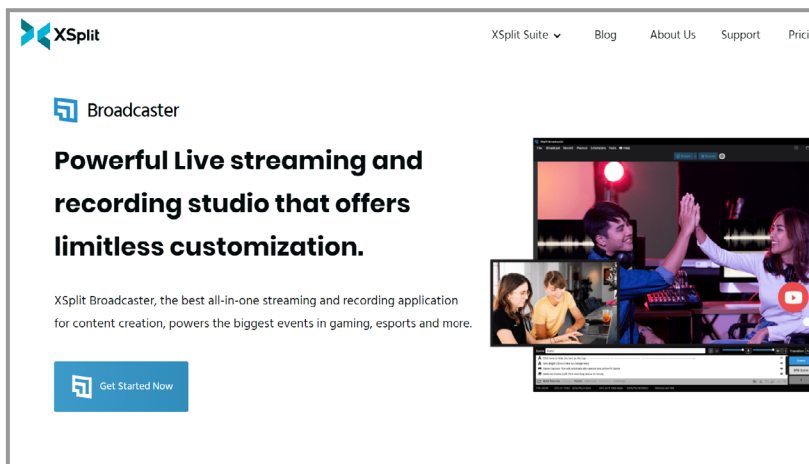
# How to live stream via Xsplit with NJ300

The XSplit which included with the N300 is a fully functional and easy-to-use live broadcast software. Before starting to introduce the software, please be sure to complete the connection process on the quick guide (please refer to: How to connect?). The following live broadcast process will be demonstrated by using a PS4 as video source.

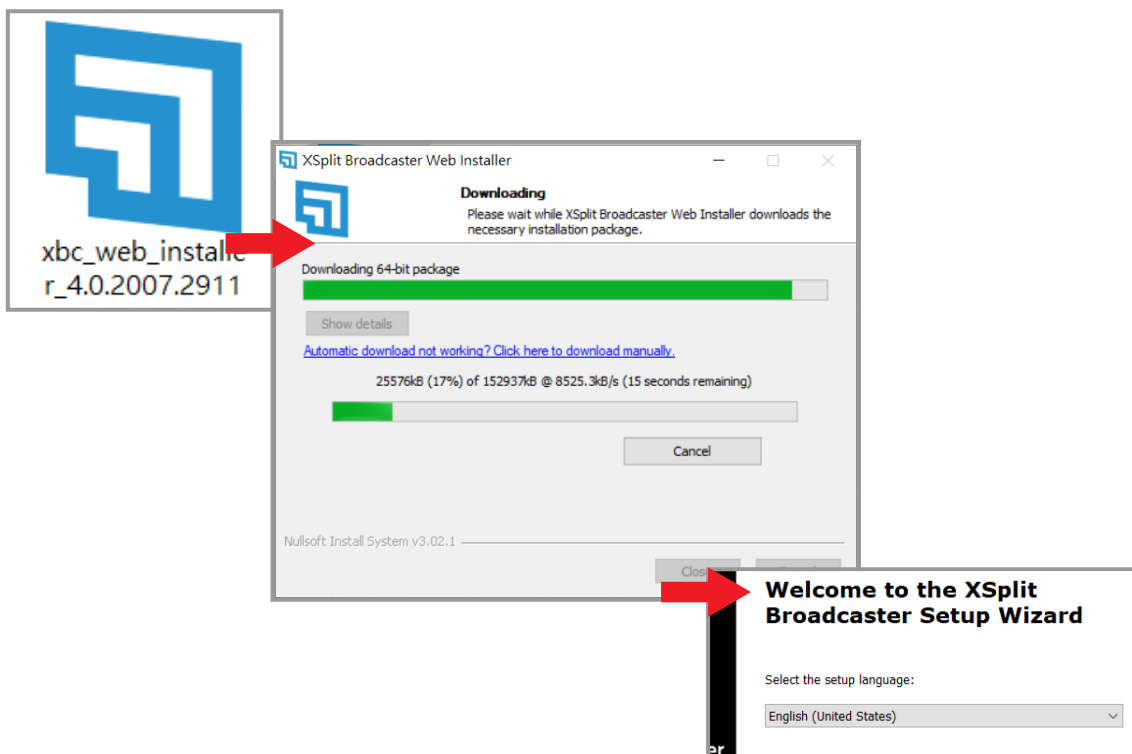
1. This software only supports Windows 10 and Windows 8.1
2. The software serial number card (one month only) is provided in the N300 package, and the software needs to be downloaded from the XSplit official website.
3. The serial number attached is for XSplit Broadcaster Professional Edition (one month)

## Download and install

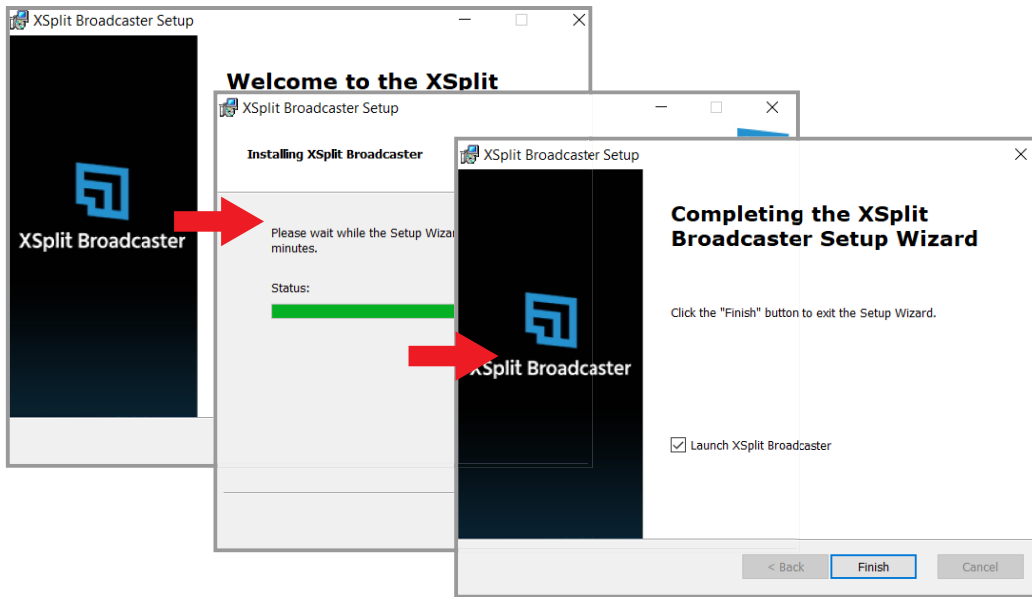
First, go to XSplit's official website and click "Download Broadcaster"



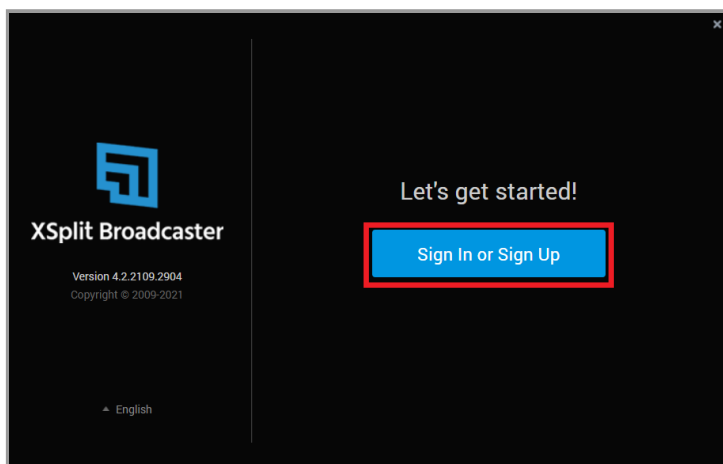
Then, open the file and start to download. After the download is complete, select the language: English



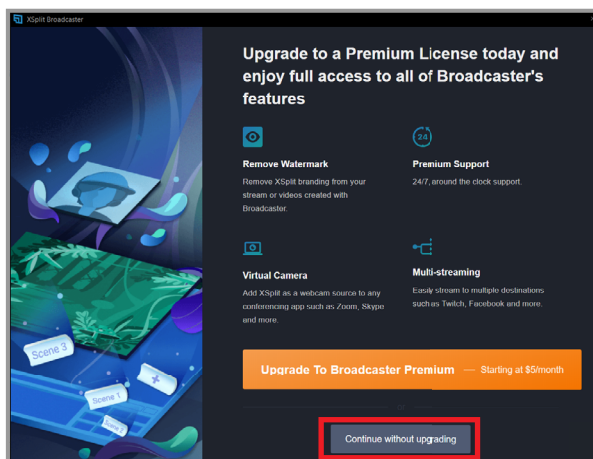
## Start installation



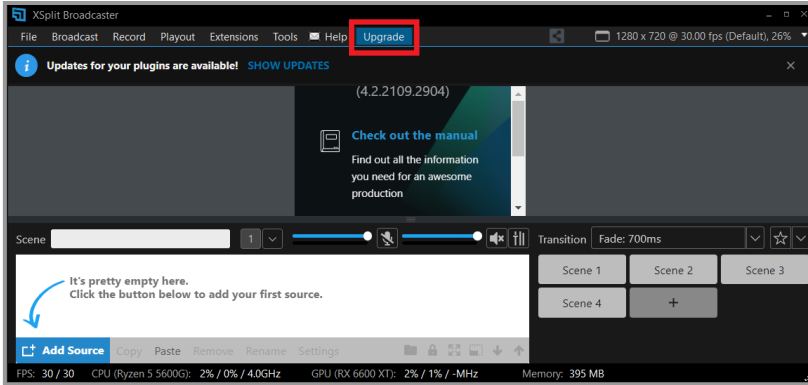
After the installation is completed, the login window will pop up, click "Sign In or Sign Up"



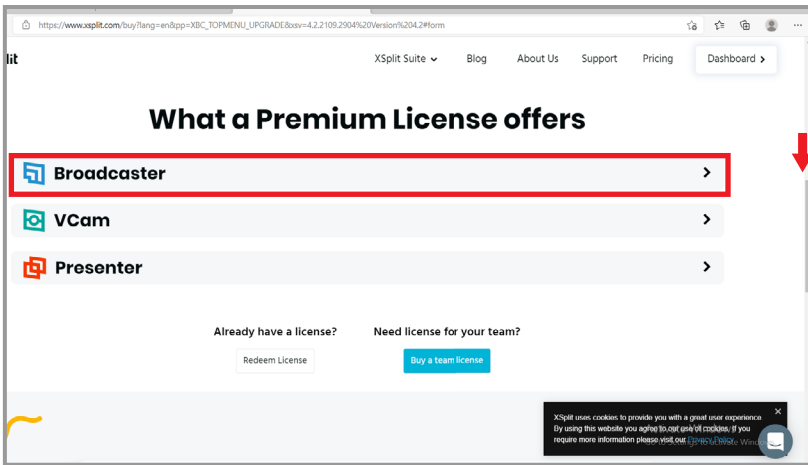
Click "Continue without upgrading"



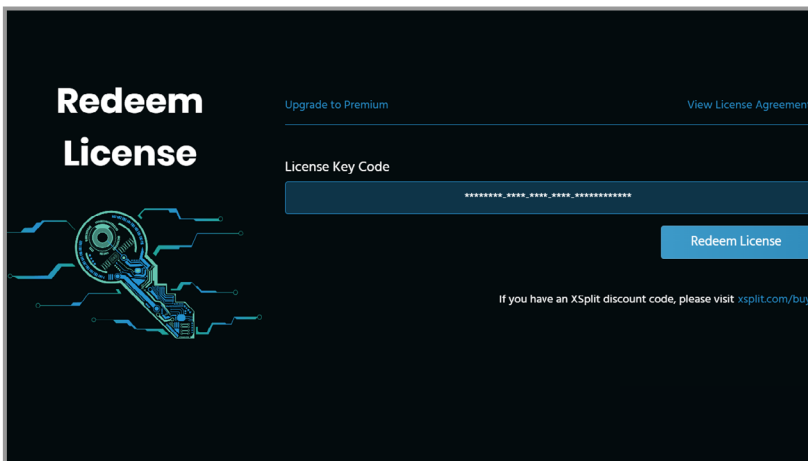
After entering the main screen of XSplit Broadcast, click "Upgrade" at the top



After entering the website, scroll up and click Broadcaster

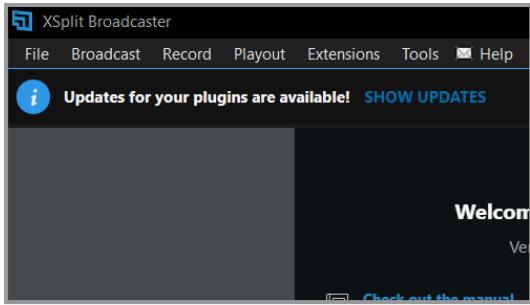


After entering the serial number, restart XSplit Broadcast



Enter the serial number included in the NJ300 package

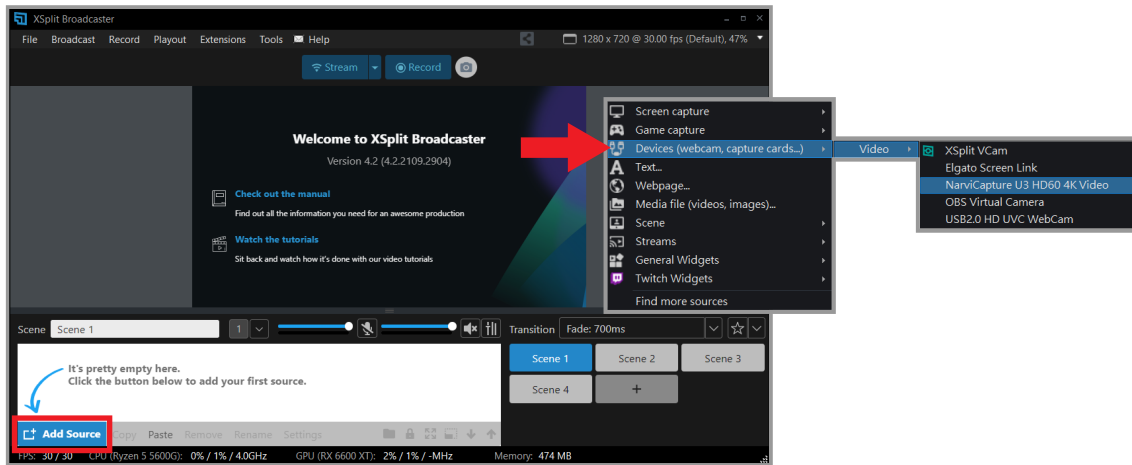
After restarting, "Your plug-in has been updated" appears in the upper left corner of the window interface, indicating that the professional version has been successfully upgraded.



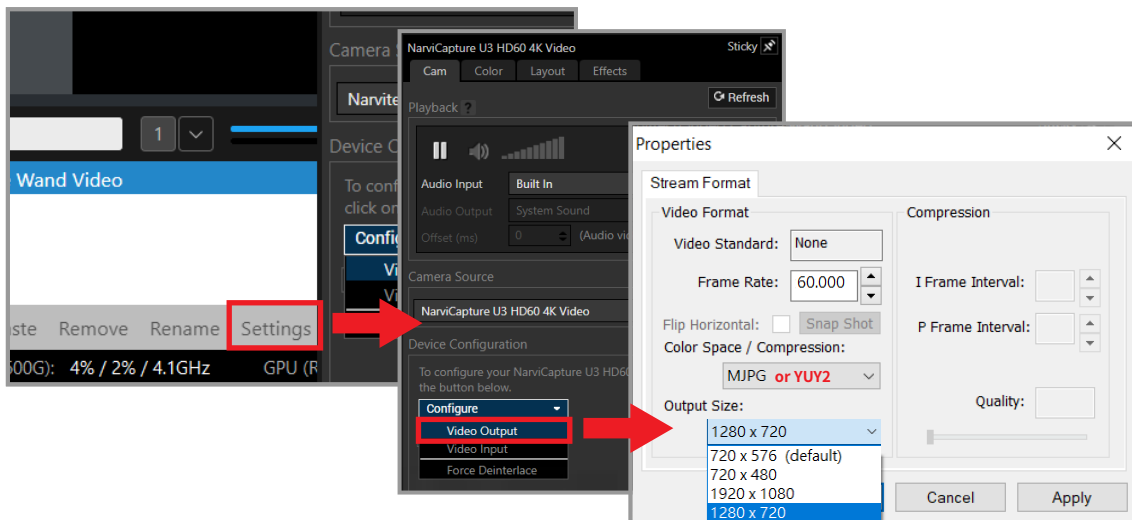
# Video and audio settings

After entering the serial number, click "Add Resource" in the lower left corner and then click [Device> Video> NarviCapture U3 HD60 4K Video]

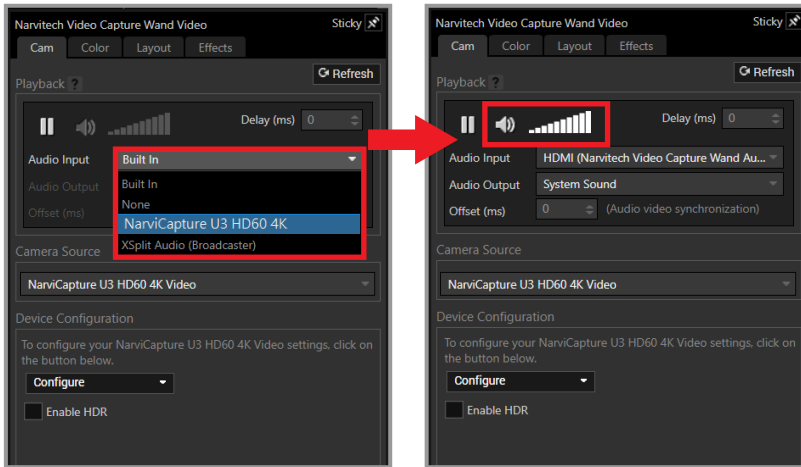
1. If the main screen is black after selecting the device video, please turn off the HDCP of the video source device [PS4: Settings> System> HDCP> Off]



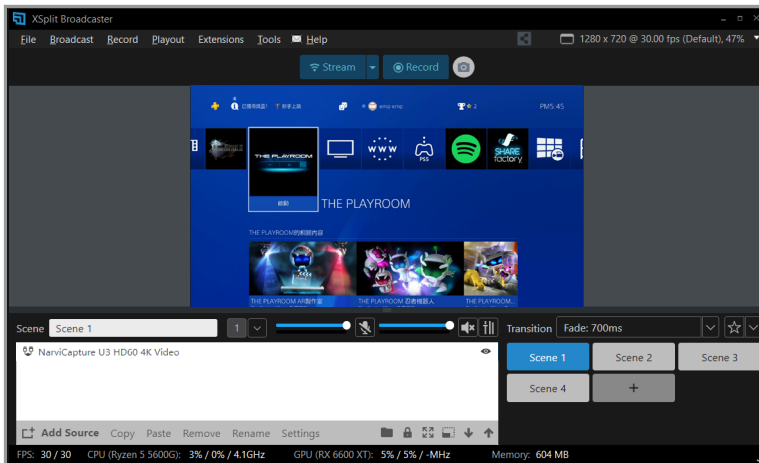
Click "Settings" in the lower left corner to open the window, click [Configuration> Video Output]. Adjust the live screen output size according to your personal needs(default: 720p). If you want to stream in 1080p, it is recommended that your upload bandwidth is at least 15Mbps or more (Can be tested through Google Fiber)



Next is the audio input. After selecting the digital audio interface (Narvitech U3 HD60 4K Video), you can adjust the volume of the NJ300 input to the live broadcast



Finally, don't forget to zoom in to the full screen, so that the video settings of the NJ300 are complete, and the video setting of NJ300 is now completed, you are ready to start live broadcasting!



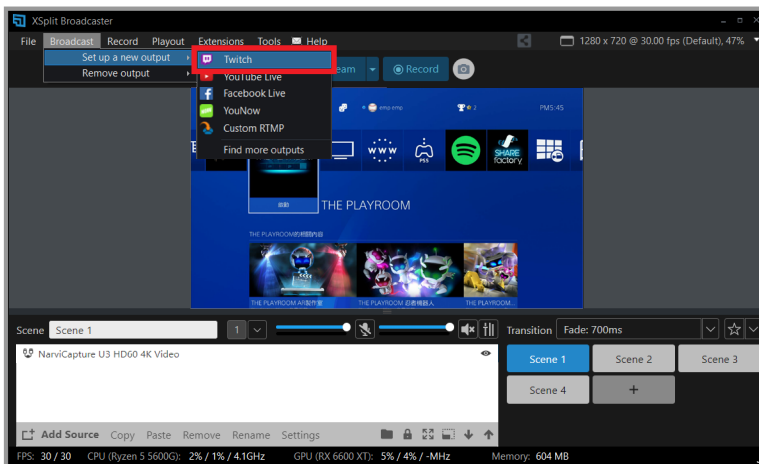
1. Click any resource in the list below and press "Delete" to delete it.
2. For other detailed settings and functions, please go to [XSplit official website> Support> XSplit Broadcaster> User manual]
3. For live streaming, it is recommended that the resolution setting is adjusted to 1080p or 720p, and the frame rate is adjusted to 60FPS or 30FPS

# Start streaming

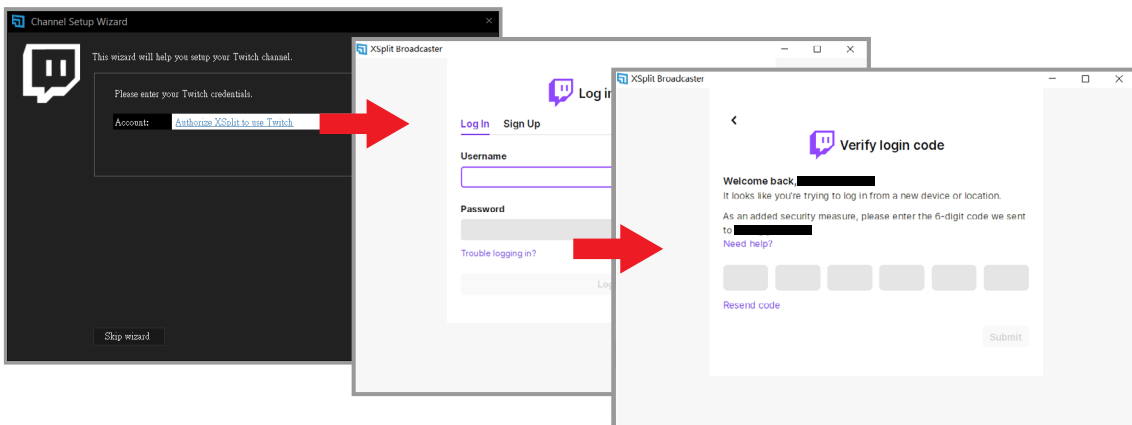
After the hardware connection and software settings are completed, you can prepare to stream. Please be sure to test before the live broadcast (for example: sign up a test account to check for your streaming quality) to ensure that the resolution, volume, and content of the live broadcast are what you want.

1. To stream on Youtube, an account must be signed up first
2. Youtube activation process: [Youtube homepage> click "Create" in the upper right corner of the page> Live broadcast and wait for 24 hours to activate the account.]
3. The highest resolution of Facebook live streaming only supports 720P

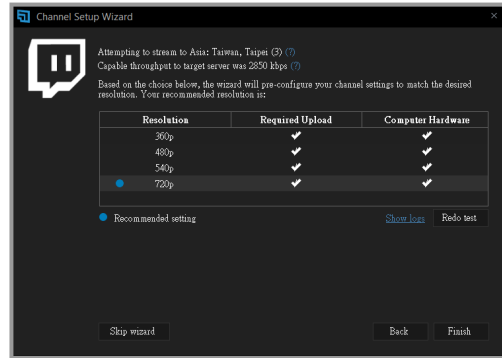
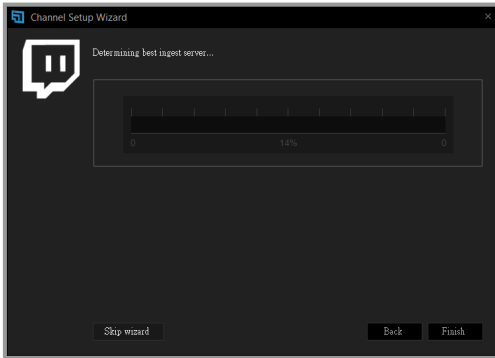
First click on the upper left corner [Broadcast> Create a new output> Choose one of the platforms (Twitch as an example)]



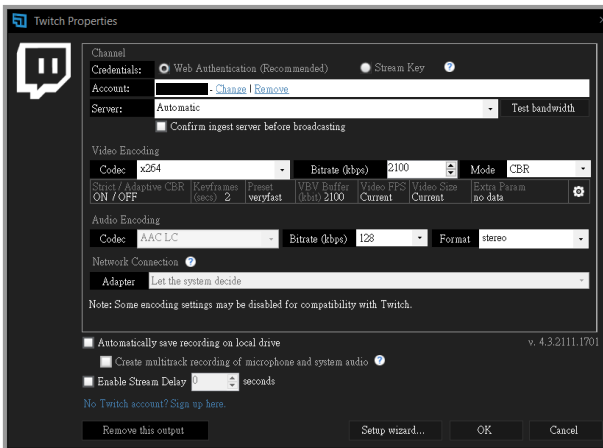
Click "Authorize XSplit to use Twitch" and open the login window. After entering the account and password, the system will automatically send a verification code to your email. Copy the verification code from the email and paste it to the field.



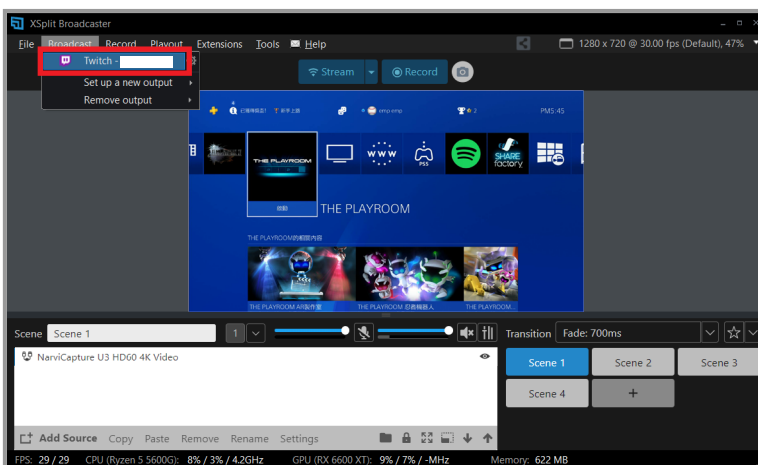
After clicking the next step, XSplit will automatically set it up, based on your network bandwidth and computer performance, to recommend you a suitable server and image quality settings. After that, please click Finish



Next, enter the live broadcast settings and go directly to [Video Encoding> Bitrate(kbps)]. Generally, it is recommended to be around 2000~2500. If there is no special requirement, the other settings do not need to be changed.

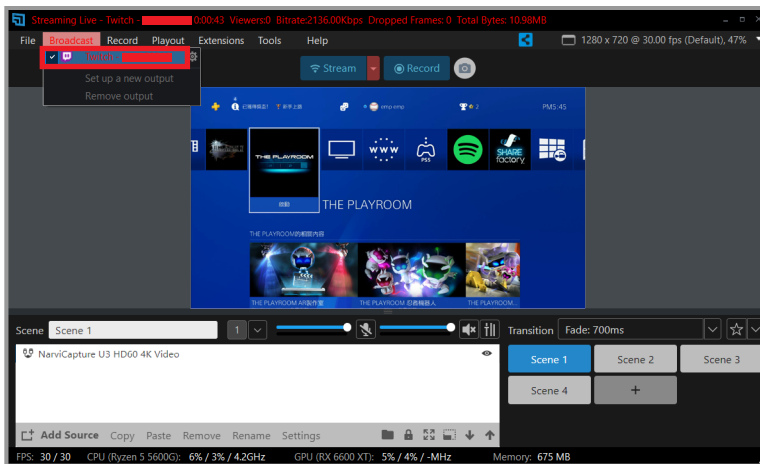


After all settings are completed, click [Broadcast> Twitch] in the upper left corner to start live streaming directly.





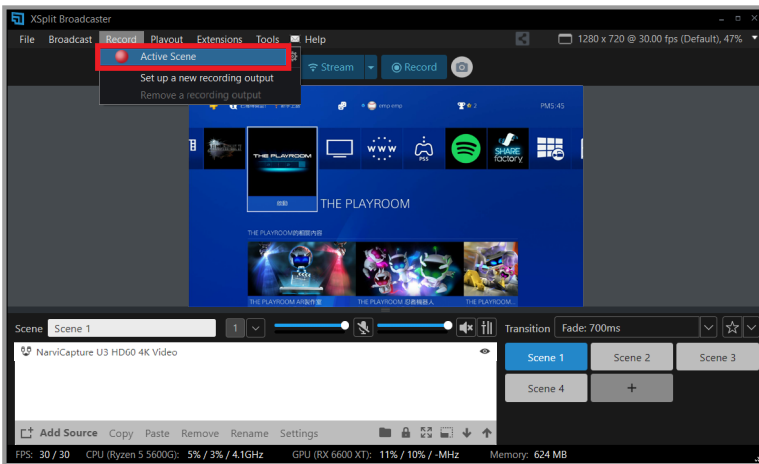
Click [Broadcast> Twitch] in the upper left corner again to end the live broadcast.



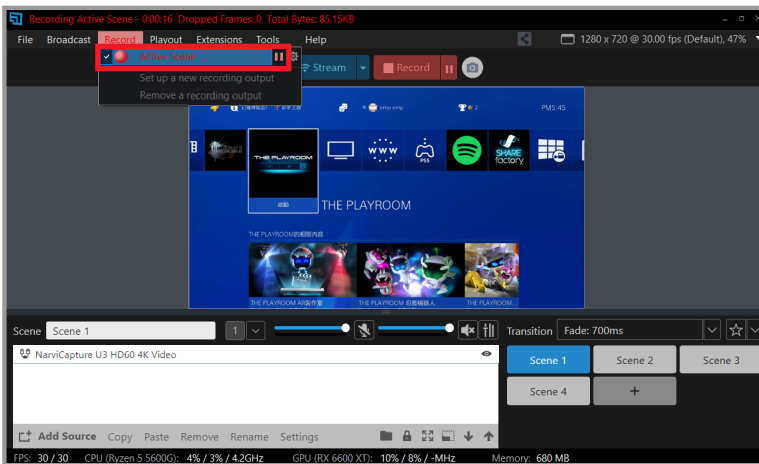
**For the XSplit live broadcast custom platform setup and more detailed settings, you can refer to [XSplit official website> Support> XSplit Broadcaster> User manual]**

# Start recording

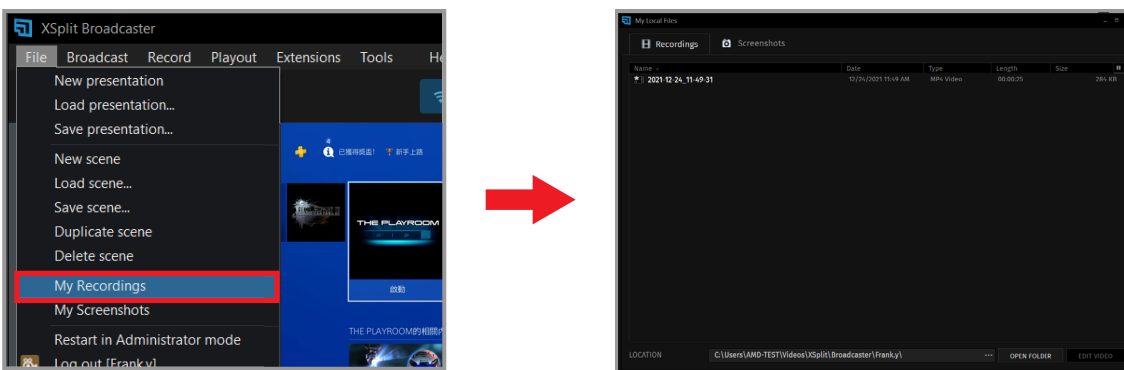
First click [Recording> Options in the red box]



To end the recording, please click the option in the red frame again



Finally, click [File> My Recordings] in the upper left corner to find the recorded video



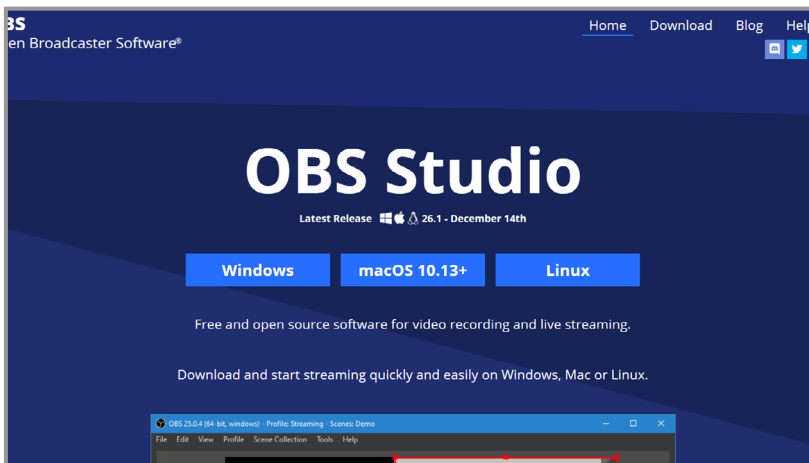
# How to live stream via OBS with NJ300

OBS is widely known as a powerful and completely free live broadcast software. However, the difficulty of getting started with OBS is very high. Besides that, there is no complete set of "User Manual" and no professional technical team can ask for help. Therefore, only fragmented tutorials can be found on the Internet. (The following live broadcast process will be demonstrated using a PS4 as video source.)

- 1.This instructions only introduces the use of NJ300 for live recording of OBS. For other functions of OBS, please find it through the Internet**
- 2.OBS supports both Windows10 and MacOS**

## Download and install

First, go to the OBS official website, click download on the area of your computer's system and start downloading

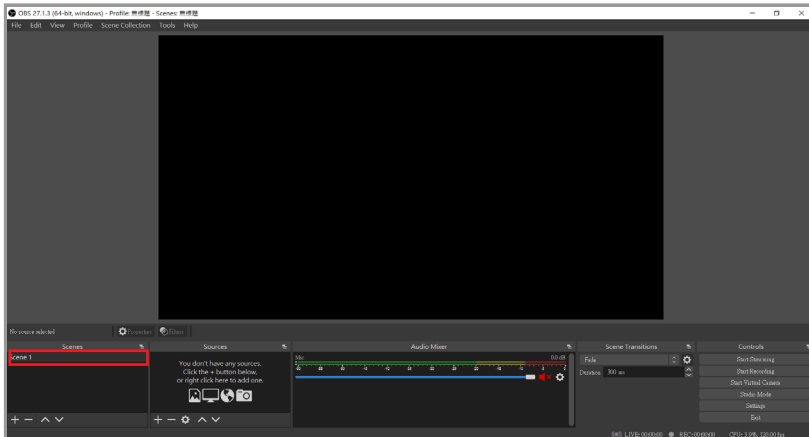


Open the downloaded file and install

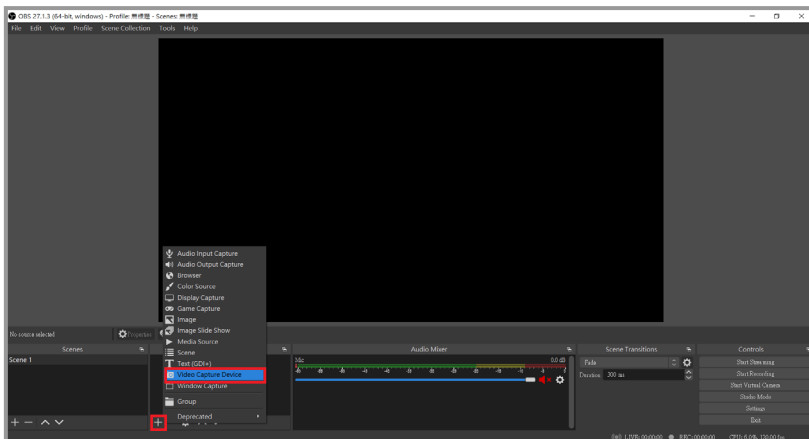


# Setting

After opening OBS, select the scene in the lower left corner (if you want to play multiple sets of videos or live content, you can create multiple sets of scenes)

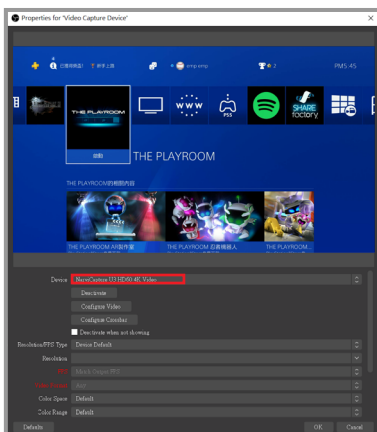


Then click [the + button in the red frame> Video capture device> Set source name] and click OK

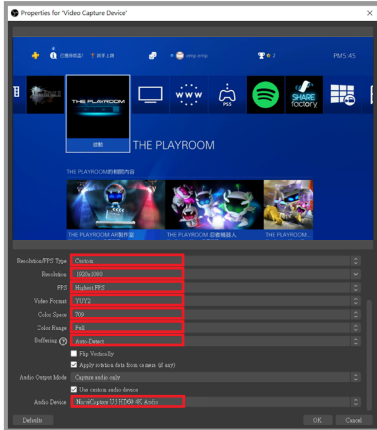


Select "NarviCapture U3 HD60 4K Video" in "Device" in the window

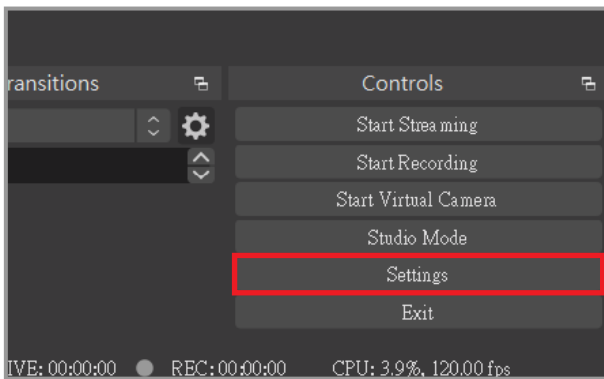
**1. If the preview screen is black after selecting the device, please turn off the HDCP of the video source device [PS4: Settings> System> HDCP> Off]**



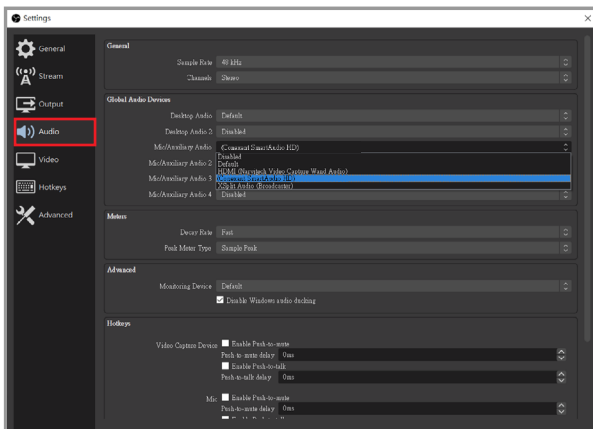
Scroll down on the right scroll bar, click [Resolution/FPS Type> Custom], and then adjust the resolution according to your personal needs (For live streaming, it is recommended to set the resolution to 1080p or 720p. Then click "Use custom audio device" option, after that, the audio device options below will pop up, and select "Digital Audio Interface (NarviCapture U3 HD60 4K Audio)



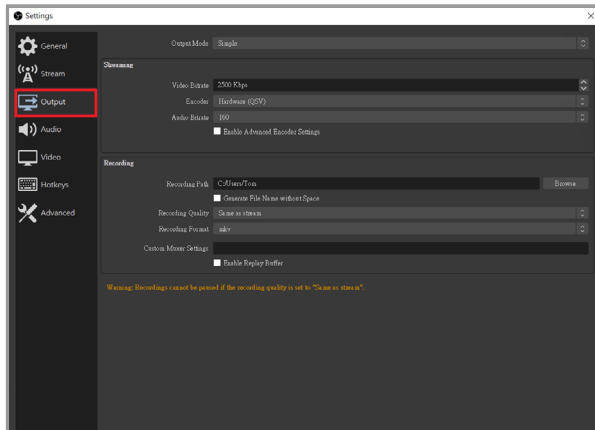
After the setting is completed, return to the main screen and click "Settings" in the lower right corner



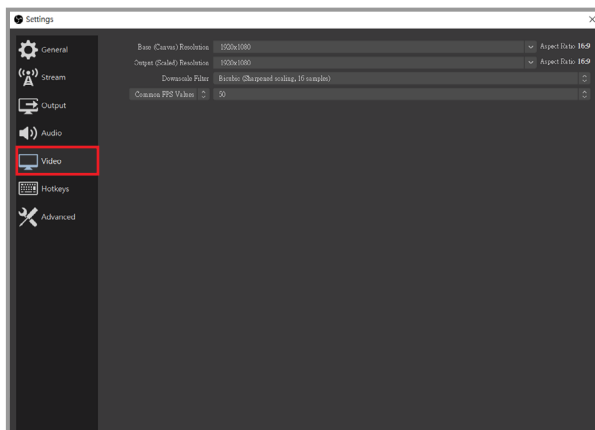
Click "Sound Effects" in the left test menu, the desktop sound effect is the audio source of the PC, and the Mic/Auxiliary is the audio source of the external device



Click "Output" in the left menu. It is recommended to set the bit rate to 2000~2500. Increasing the bit rate will affect the CPU performance and network bandwidth.



Click "Video" in the left menu to adjust the output resolution of the live recording screen according to your personal needs (default: 720p). If you want to perform live recording at 1080p, it is recommended that your upload bandwidth be at least 15Mbps or more (you can test it through Google Fiber)

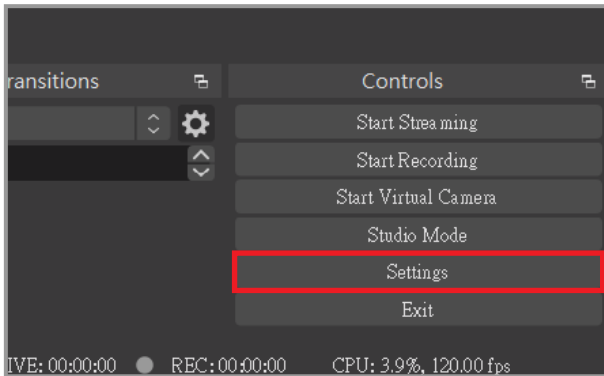


# Start streaming

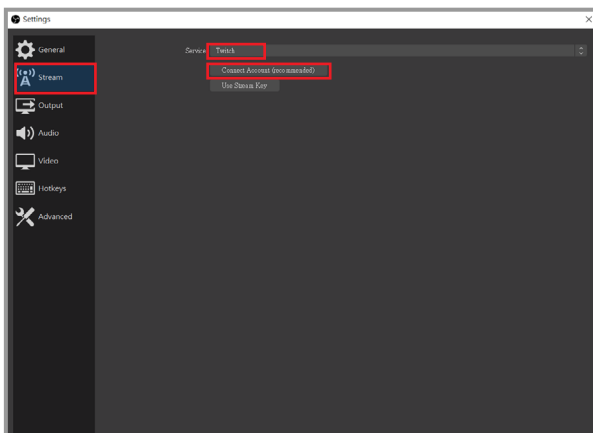
After the hardware connection and software settings are completed, you can prepare to stream. Please be sure to test before the live broadcast (for example: sign up a test account to check for your streaming quality) to ensure that the resolution, volume, and content of the live broadcast are what you want.

1. To stream on Youtube, an account must be signed up first
2. Youtube activation process: [Youtube homepage> click Create in the upper right corner of the page> Live broadcast and wait for 24 hours to activate the account.]
3. The highest resolution of Facebook live streaming only supports 720P

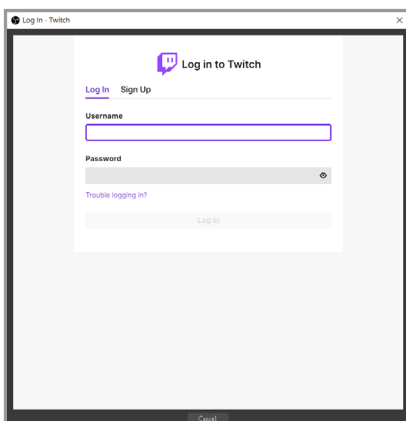
First click "Settings" at the bottom right corner of the main screen



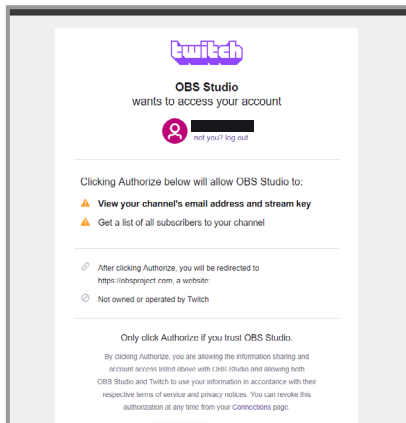
Click "Stream" in the left menu, select the platform you want to stream on (Twitch as an example), and then click Link Account



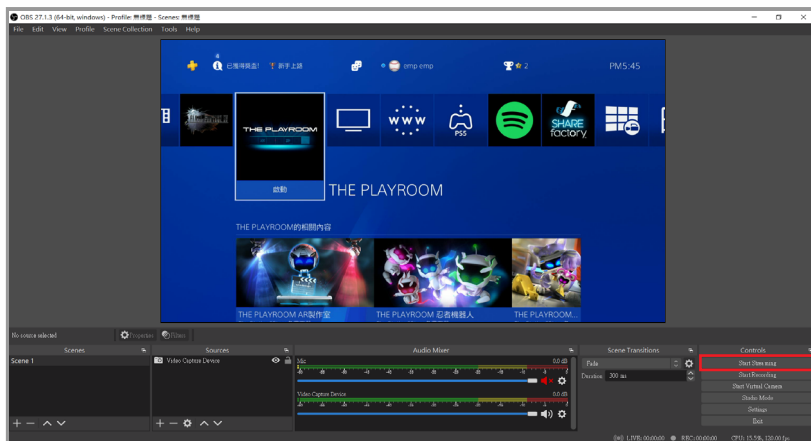
After entering your Twitch account and password, the system will automatically send a verification code to your email



After entering the verification code, please agree to the authorization



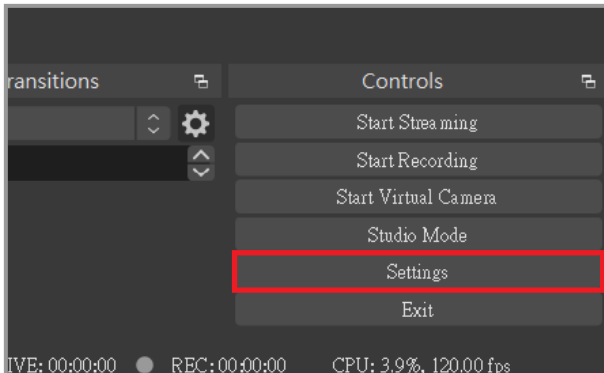
Finally, click "Start Streaming" in the lower right corner can start live!



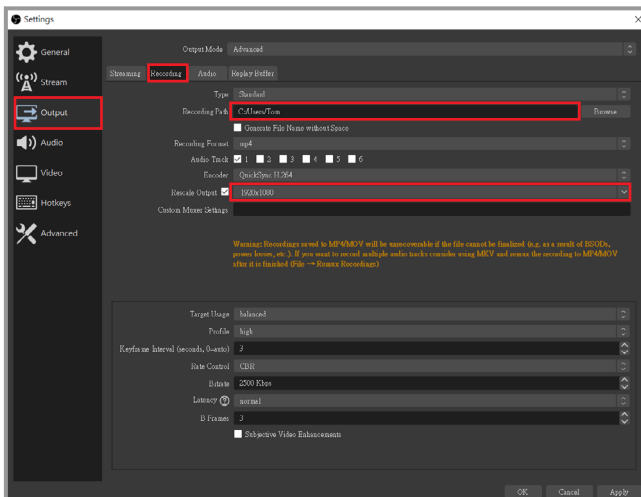


# Start recording

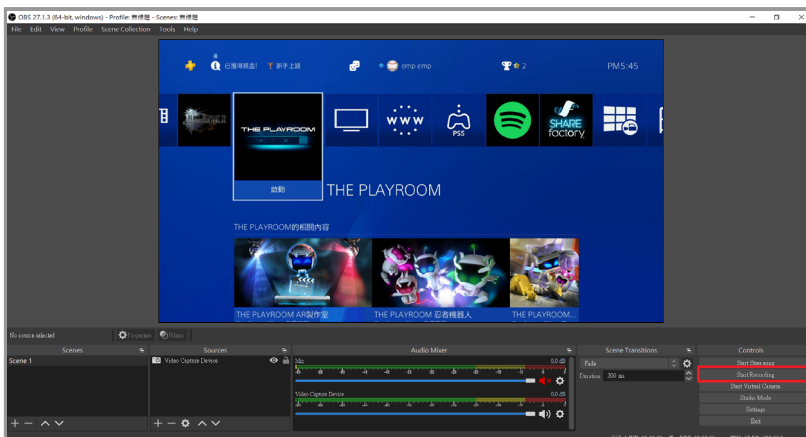
First click "Settings" at the bottom right corner of the main screen



Click "Output" in the left menu, then click to adjust the recording path after recording (send the recorded video to the specified location) and then adjust the rescaled output to the appropriate resolution by your own preferences.



Finally, click "Start Recording" in the lower right corner to start recording!



## NJ300 special function: Party Chat

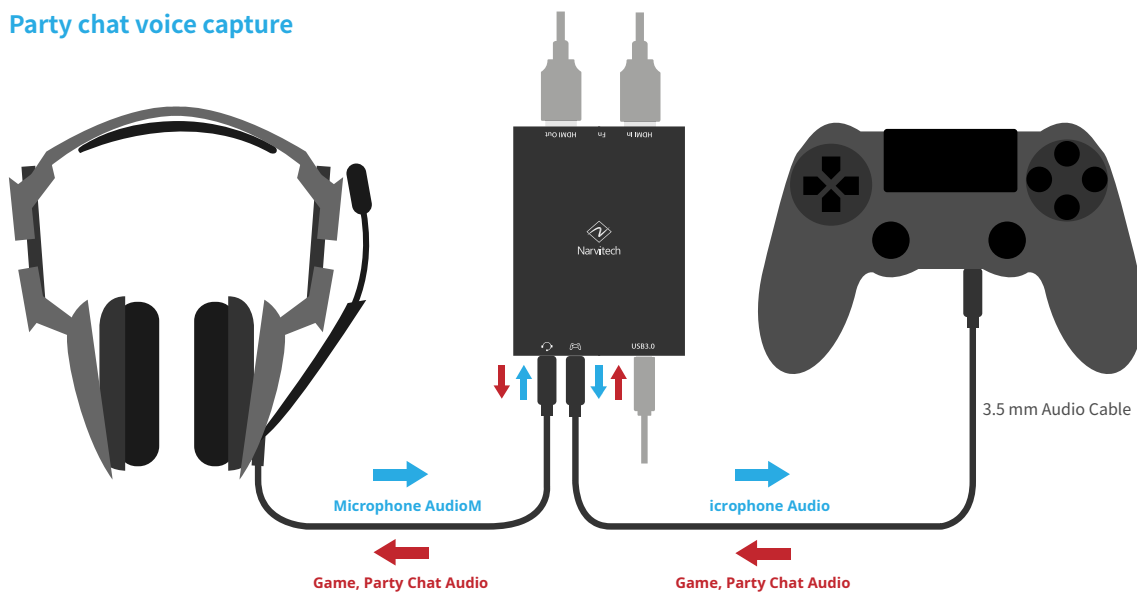
This function is to capture the conversation of the PS4 or XBOX party chat voice and your own dialogue content. If you want to broadcast the party chat voice live, but do not want to broadcast the sound to cause noise, this function would be Perfect for you.

1. When using the Party Chat, plug the PS4 handle into the USB cable, and the earphone end will produce electromagnetic interference sound
2. Please use a headset with a microphone
3. The following introduction will take PS4 as an example

### Hardware connection

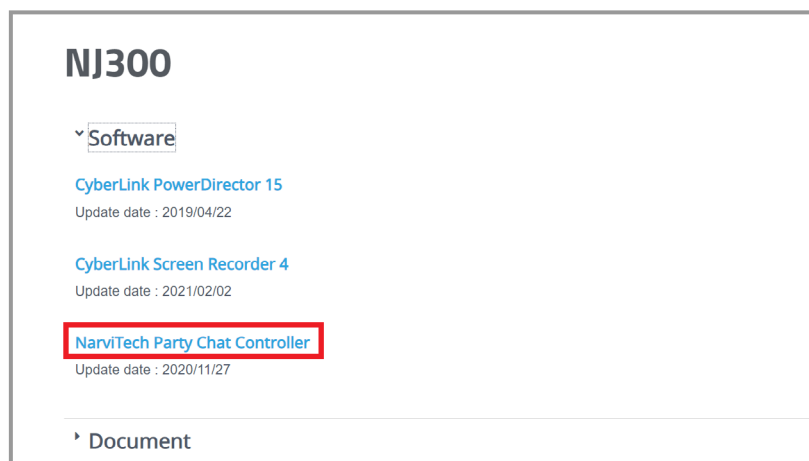
First prepare NJ300, headset, PS4 handle (take PS4 as an example) and 3.5mm headset transmission cable, then connect them as shown in the figure below

#### Party chat voice capture



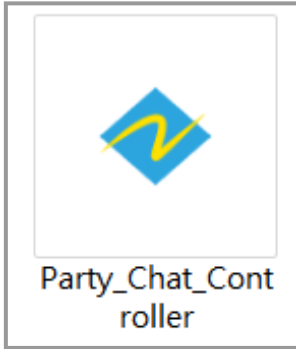
### Volume Control Software Download & Operation

First, go to Narvitech's official website, then go to Support Center > Download Area > NJ300 > Software to find the download link: Narvitech Party Chat Controller



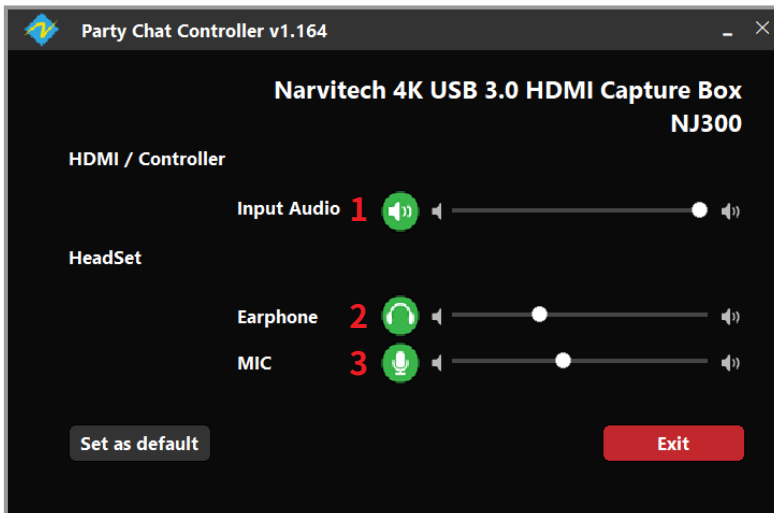
After entering the page, pull down to NJ300 to see the

After the download is completed, unzip the file and open the Party Chat Controller

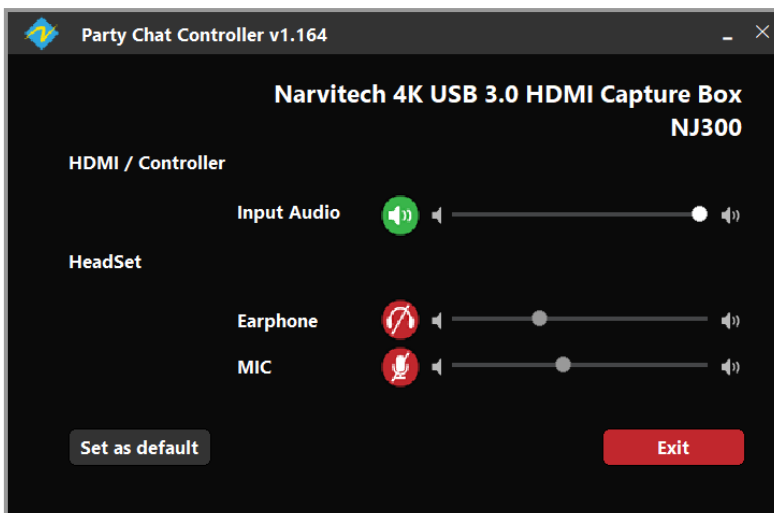


After opening, the interface is as shown in the figure, and the functions are as follows:

1. Control the volume of the game handle during the live broadcast or recording (if the party chat function is not enabled, the volume during HDMI live recording will be controlled instead)
2. Control the volume of the headset output
3. Control the microphone of the headset



Click the button to the left of the slot to mute it



# Notices

## **FC** Federal Communications Commission

This equipment has been tested and found to comply with the limits for a Class B digital device, pursuant to part 15 of the FCC Rules. These limits are designed to provide reasonable protection against harmful interference in a residential installation. This equipment generates, uses and can radiate radio frequency energy and, if not installed and used in accordance with the instructions, may cause harmful interference to radio communications. However, there is no guarantee that interference will not occur in a particular installation. If this equipment does cause harmful interference to radio or television reception, which can be determined by turning the equipment off and on, the user is encouraged to try to correct the interference by one or more of the following measures:

- \* **Reorient or relocate the receiving antenna.**
- \* **Increase the separation between the equipment and receiver.**
- \* **Connect the equipment into an outlet on a circuit different from that to which the receiver is connected.**
- \* **Consult the dealer or an experienced radio/ TV technician for help.**

### **CAUTION:**

This device complies with Part 15 of the FCC Rules. Operation is subject to the following two conditions: (1) this device may not cause harmful interference, and (2) this device must accept any interference received, including interference that may cause undesired operation.



### **Disposal of Waste of Electrical and Electronic Equipment Within the European Union**

The mark of crossed-out wheeled bin indicates that this product must not be disposed of with your other household waste. Instead, you need to dispose of the waste equipment by handing it over to a designated collection point for the recycling of waste electrical and electronic equipment. For more information about where you can drop off your waste equipment for recycling, please contact your local city recycling office or the dealer from whom you purchased the product.

# Help

## Support

You can go to Narvitech's official website for the latest updates on the product and also support information.

Official website: <https://Narivtech.com>

Support page: <https://narvitech.com/home/support-center/>

## Contact Us

You can also contact us via the following information, so we can provide the assistance you need.

Contact us on: <https://narvitech.com/home/contact-us-2/>

E-mail: [Supprot@Narvitech.com](mailto:Supprot@Narvitech.com)

## Blog

You can visit Narvitech's Blog to find out more information and resource.